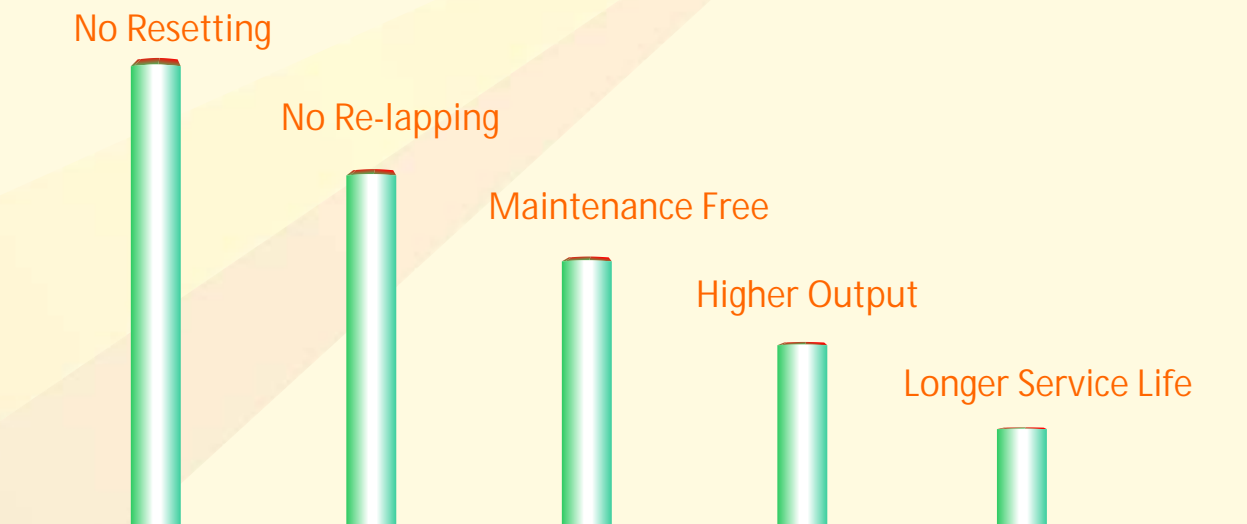


MULTI POINT DIAMOND DRESSER



Multipoint diamond dresser consist of number of natural diamonds of a good crystal character fixed into a special wear resistant bond. The diamonds can be arranged in different pattern in single layers or multiple layers depending upon the field of operation. Several diamond points in contact with the wheel face, reduce the unit pressure on each point resulting in a longer tool life with full utilization. Multipoint are used for large wide grinding wheels.



To get the maximum tool life

Set the Multipoint tool into the center of the grinding wheel.

Depth of cut should not exceed more than 0.01-0.04 mm.

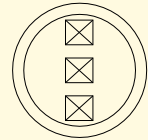
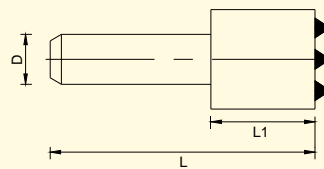
Use plenty of coolant to increase the tool life.

The mounting must be vibration free, with the clamping length as short as possible.

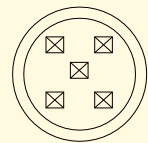
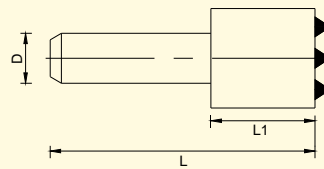
MULTI POINT DIAMOND DRESSER

Tool Code Diamond

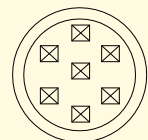
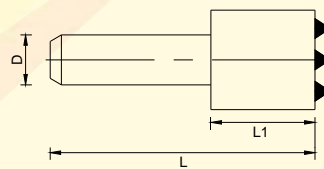
Qty.
MPD - 3 3



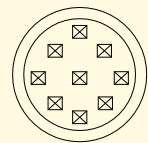
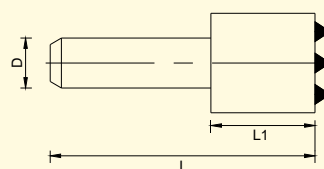
MPD - 5 5



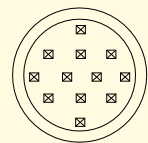
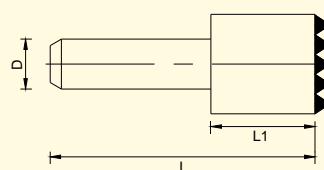
MPD - 7 7



MPD - 9 9



MPD - 12 12



Standard size is D = 12.70mm, L = 75.00mm, L1 = 15.70mm
Please specify if D, L & L1 is non standard.